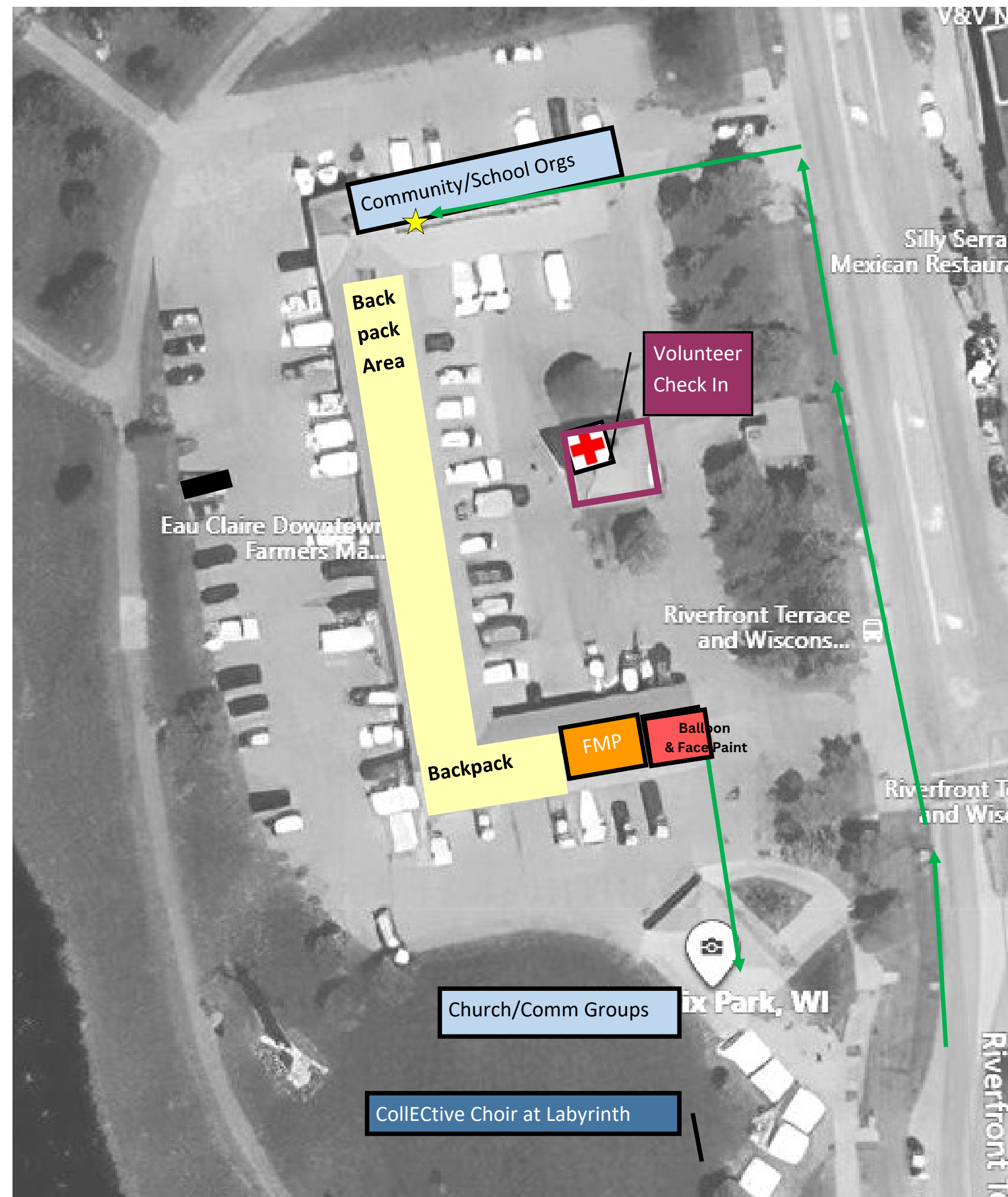




BACK TO SCHOOL EVENT

AUGUST 21st 4:30-7:30 PM

- Volunteers can park where they desire and then check in at the Gazebo (purple). FIRST AID TABLE will be located here
- Attendees will start lining up under the North side canopy and then follow the side walk south along Riverfront Terrace. (green path)
- Community Groups (ex: Scouts) who enquire can have a table set up in that area. Room for 8 groups.
- At the Star families will meet a FAMILY HELPER who will walk with them through the backpack stations and fill out a card with the demographics of the family.
- The Backpack Area will have 2 tables on the interior of the horseshoe to place backpacks on. BACKPACK DISTRIBUTERS will keep the tables full of varieties.
- Feed My People will be set up near end offering meal packs, diapers, and a resource on how to get food during the school year.
- Church and other Community Groups can set up tables/ tents about other resources in the grass along the sidewalk to the Labyrinth (where art vendors are during Farmers Market days).
- COLLECTive Choir will be performing in the Labyrinth



BACKPACK EVENT

